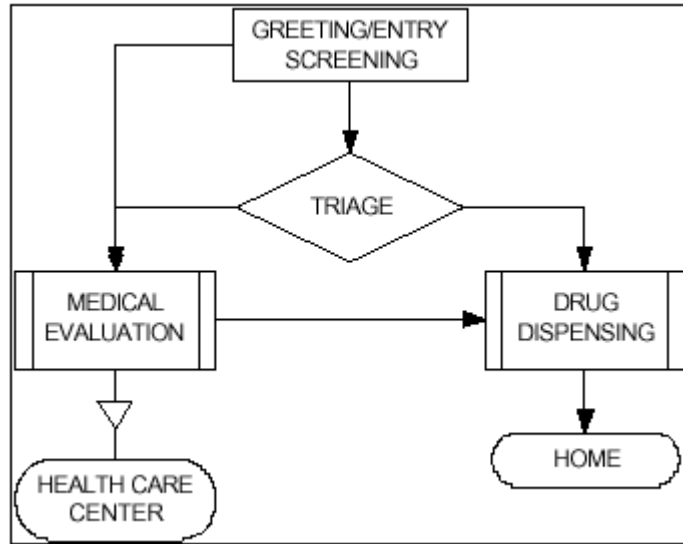
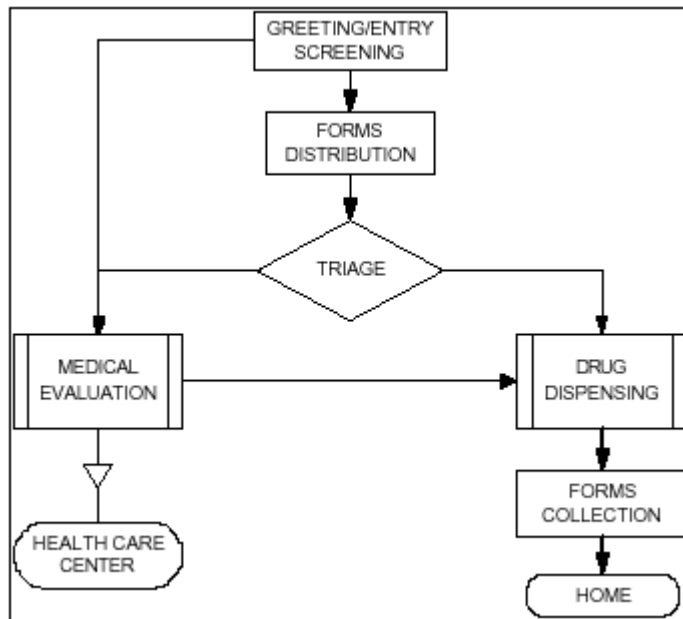


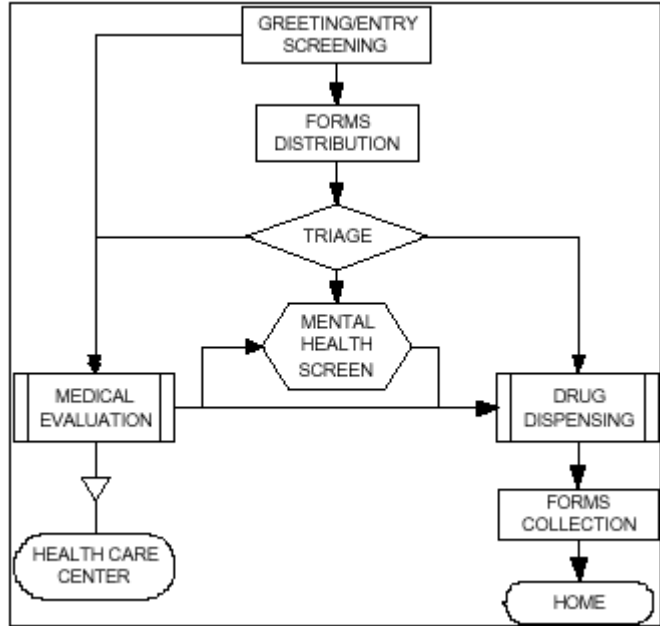
#1 This diagram includes a greeting and screening station for rapid identification and isolation of symptomatic persons and a triage station for potentially ill persons, ones with multiple health problems, or where the medication is contraindicated



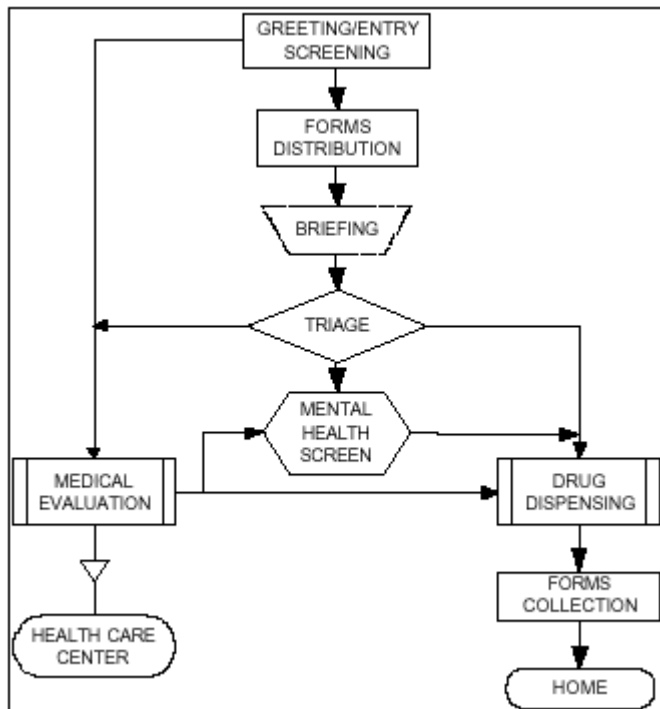
#2 This diagram includes stations for form distribution prior to triage and form collection directly prior to exit.



#3 This diagram includes a mental health evaluation station.



#4 This diagram includes a separate station for briefing about the medication.



#5 This diagram includes a separate drug triage area and an “express drug” line to facilitate rapid dispensing of medication to asymptomatic persons.

